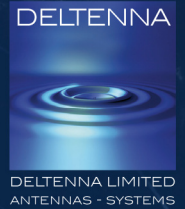


# DATA SHEET

## DCS DS 50 50

### RUGGED ANTENNA

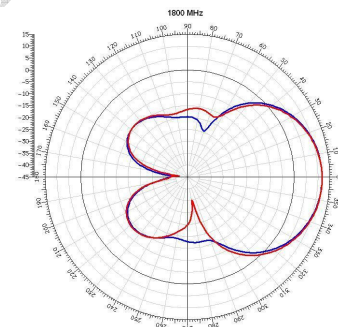
Deltenna Limited  
 9 Forest Gate, Pewsham, Chippenham,  
 Wiltshire, SN15 3RS, United Kingdom  
 Tel +44 (0)1249 450 910 Fax +44 (0)1249 656549  
[info@deltenna.com](mailto:info@deltenna.com) [www.deltenna.com](http://www.deltenna.com)



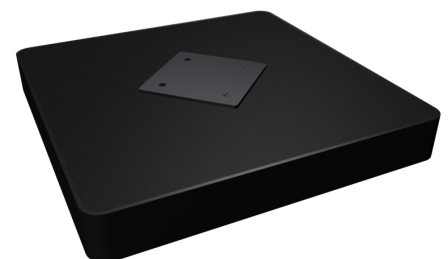
<b>Wide Band</b>	<b>1710MHz – 1880MHz</b>
<b>Polarisation</b>	<b>CP</b>
<b>Azimuth Half Power Beamwidth</b>	<b>50</b>
<b>Elevation Half Power Beamwidth</b>	<b>50</b>
<b>Fixed Electrical Tilt</b>	<b>0</b>

Mechanical Specifications	
Input	2 x SMA female (1 loaded)
Connector Position	Rear
Weight	
Wind Load	40N
Max. wind velocity	130Km/h
Packing Size	NA
Height/width/depth	185/185/25 mm

Type No	DCS DS 50 50
Frequency Range	1710 - 1880 MHz
Polarisation	Circular
Gain	10dBi @ 1880MHz
Axial Ratio	<3dB
Azimuth Half Power beam width Copolar	50 degrees +/- 5 degrees
Elevation Half Power beam width Copolar	50 degrees +/- 5 degree
Fixed Electrical tilt options #	0 degrees
Sidelobe suppression for firstsidelobe above horizon	NA
Front to back ratio copolar	>20 dB
Cross Polar Ratio on boresight	Typically 20 dB
Isolation: port to port	-15dBi
Impedance	50Ω
VSWR	<2:1
Max power per input	20 Watts at 50 degrees ambient temperature



**Gain (dBi)**  
 Vertical plane red  
 Horizontal plane blue



**Radome available in any standard RAL colour by request**

